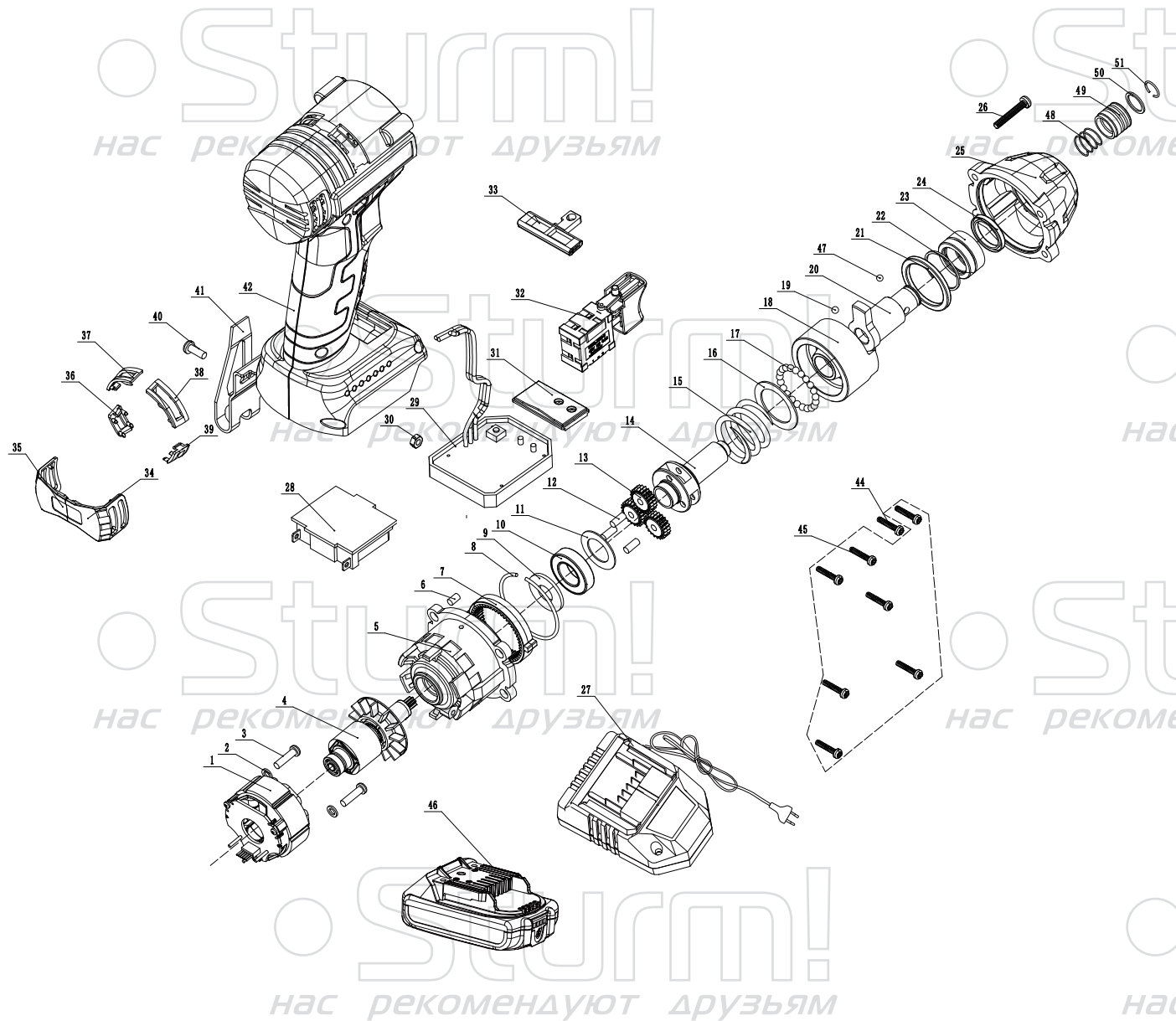


CD300H



NO.	DESCRIPTION
1	STATOR
2	GASKET 1
3	SCREW ST4X15
4	ROTOR
5	MIDDLE COVER
6	WOOL PIN
7	INNER GEAR RING
8	SPRING RING1
9	WOOL FELT
10	BEARING 6902
11	GASKET2
12	PIN
13	EPICYCLIC GEAR
14	DRIVE SHAFT
15	SPRING
16	GASKET3
17	BALL3.96
18	IMPACT BLOCK
19	BALL5.5
20	OUT SHAFT
21	GASKET4
22	SPRING RING 2
23	AXLE SLEEVE
24	SKELETON SEAL
25	GEAR BOX
26	SCREW ST4X25
27	CHARGER
28	BATTERY FOOT
29	PCB
30	M4 NUT
31	ADJUST BUTTON
32	SWITCH
33	BUTTON
34	RIGHT INSERT
35	LEFT INSERT
36	LEFT AIR OUTLET INSERT 1
37	LEFT AIR OUTLET INSERT 2
38	RIGHT AIR OUTLET INSERT2
39	RIGHT AIR OUTLET INSERT1
40	SCREW M4X8
41	BELT HOOK
42	HOUSING
44	SCREWM3X16
45	SCREWST3X16
46	BATTERY PACK
47	STEEL BALL 3.7MM
48	SPRING
49	LOCKING SLEEVE
50	WASHER 12
51	CIRCLIP